

Granny Square month 2021 CAL



Day 14

Instagram [@kriuchkovavenera](https://www.instagram.com/kriuchkovavenera)

What you need:


Knitcraft Cotton Blend


in:


- Teal
- Hot Pink
- Crochet hook 5 mm
- Scissors

Abbreviations

Ch - Chain 

Ss - Slip stitch 

Dc - Double crochet 

Tr - Treble crochet 

St (s) - stitch (es)

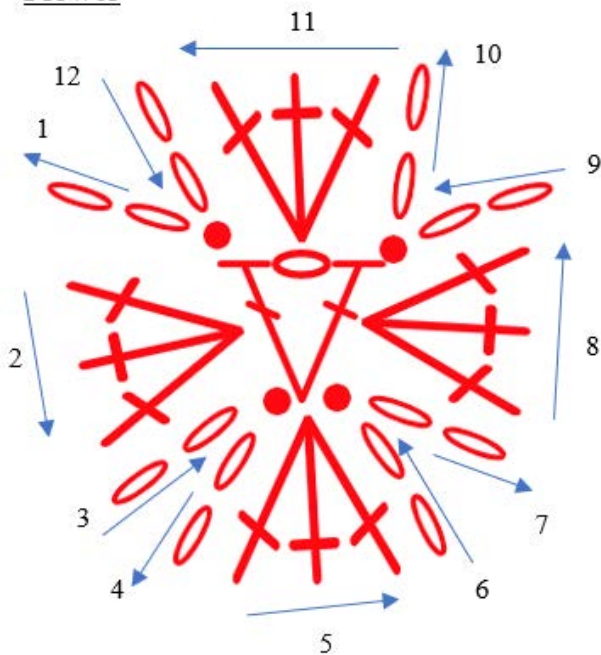
Ch2 at the beginning of row
does not count as a stitch

Flower: 2ch, 3tr into space, 2ch, ss; 2ch, 3tr into space, 2ch, ss;
 2ch, 3tr into space, 2ch, ss; 2ch, 3tr into space, 2ch, ss.

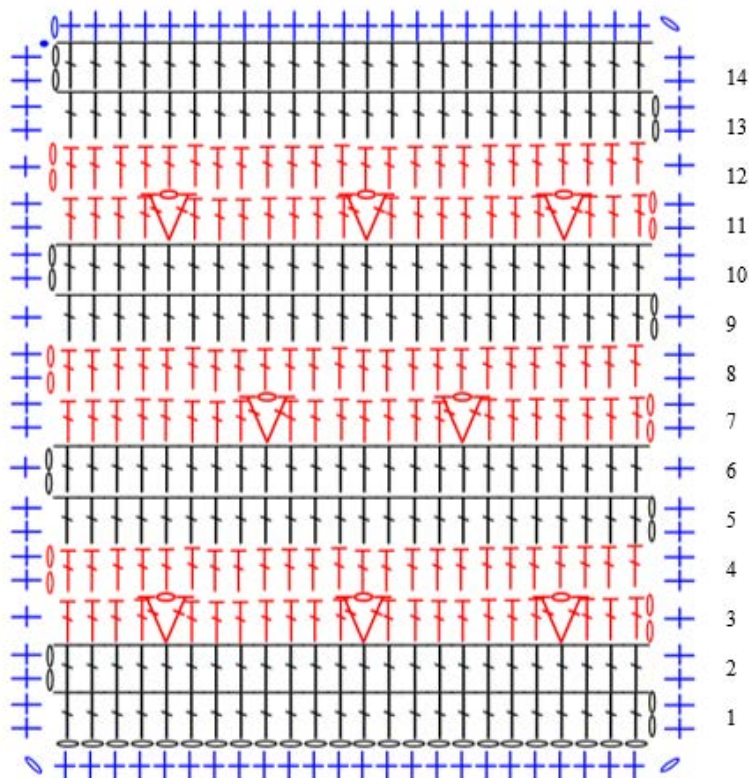
Space: (1tr, 1ch, 1tr).

Crochet according to the pattern:

Flower



Square



Pattern:

Starting in Teal, ch 26

Row 1: 1tr in 3rd ch from hook, 1tr in each st across. Turn (24sts)

Row 2: ch2, 1tr in each st across. Turn

Row 3: Join in Hot Pink, ch2, 3tr, (1tr, 1ch, 1tr) in next st, Flower, 7tr, (1tr, 1ch, 1tr) in next st, Flower, 7tr, (1tr, 1ch, 1tr) in next st, Flower, 4tr. Turn

Row 4: ch2, 1tr in each st across. Turn

Row 5: Continue in Teal, ch2, 1tr in each st across. Turn

Row 6: ch2, 1tr in each st across. Turn

Row 7: Continue in Hot Pink, ch2, 7tr, (1tr, 1ch, 1tr) in next st, Flower, 7tr, (1tr, 1ch, 1tr) in next st, Flower, 8tr. Turn

Row 8: ch2, 1tr in each st across. Turn

Row 9: Continue in Teal, ch2, 1tr in each st across. Turn

Row 10: ch2, 1tr in each st across. Turn

Row 11: Continue in Hot Pink, ch2, 3tr, (1tr, 1ch, 1tr) in next st, Flower, 7tr, (1tr, 1ch, 1tr) in next st, Flower, 7tr, (1tr, 1ch, 1tr) in next st, Flower, 4tr. Turn

Row 12: ch2, 1tr in each st across. Turn

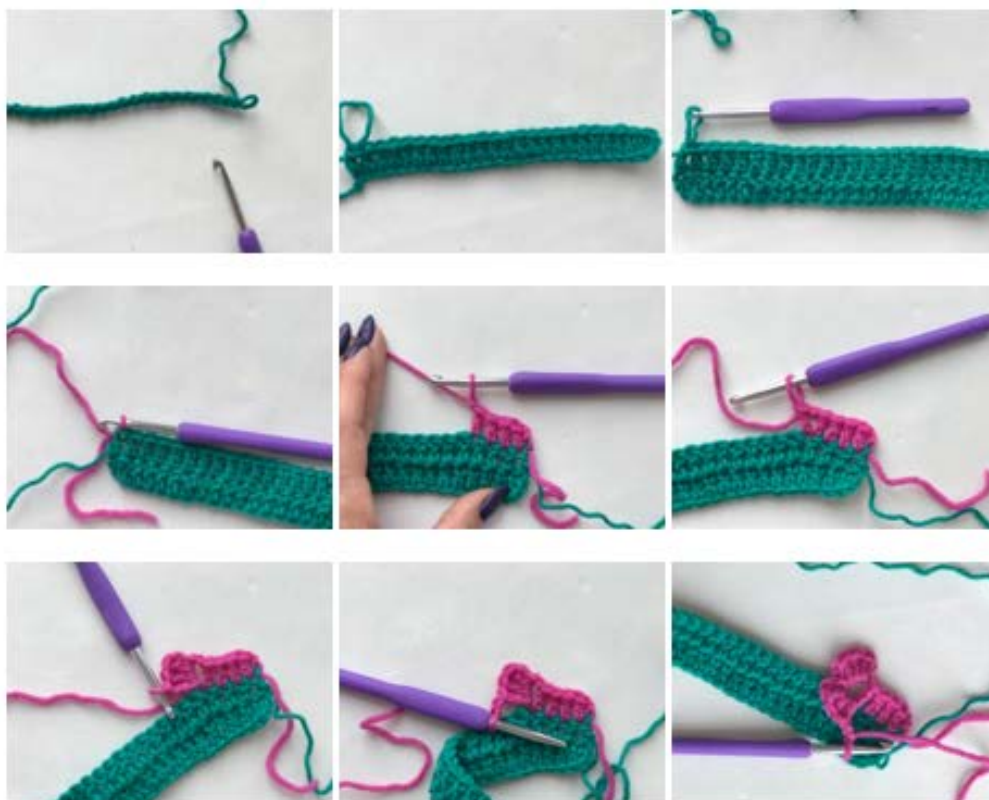
Row 13: Continue in Teal, ch2, 1tr in each st across. Turn

Row 14: ch2, 1tr in each st across. Turn

Done!

Finish with a double crochet border in a contrasting colour to your square.

Ch1, 24dc, ch1, 24dc, ch1, 24dc, ch1, 24dc, ss.







You've now completed
your granny square!

Don't forget to head back to the
blog where a new square will be
released at 10 am, Monday to
Saturday.

[https://www.hobbycraft.co.uk/ideas/
knitcraft/granny-square-month-
cal-2021](https://www.hobbycraft.co.uk/ideas/knitcraft/granny-square-month-cal-2021)



SCAN ME



Please note: This pattern is for personal use only.